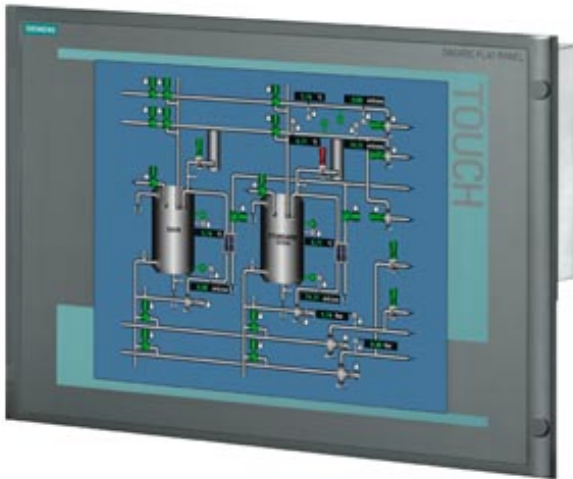


SIMATIC Flat Panel 15T extended 15-inch Touch TFT screen with 1024x 768 pixels resolution for 24 V DC and 120/240 V AC, VGA, DVI-D interface, can be placed up to 30 m away



Display	
Design of display	TFT display, LED backlighting
Screen diagonal	15 in
Display width	304.1 mm
Display height	228.1 mm
On Screen Display (OSD) configuration	Yes
Number of colors	16 000 000; 16.2 million
Viewing angle	100° x 90° (min)
Resolution (pixels)	
• Horizontal image resolution	1 024 Pixel
• Vertical image resolution	768 Pixel
General features	
• Brightness/contrast	> 260 cd/m <sup>2</sup> / 350:1
Backlighting	
• Type of backlighting	LED, dimmable
• MTBF backlighting (at 25 °C)	50 000 h; At 25°C
• Backlight dimmable	Yes; 0-100 %
Control elements	

Control elements	Touch
<b>Input device</b>	
• Integrated mouse cursor control	No
<b>Keyboard fonts</b>	
• Function keys	No
— Number of function keys	0
<b>Touch operation</b>	
• Design as touch screen	Yes
<b>Installation type/mounting</b>	
Design	Built-in unit
VESA mounting	No
Built-in unit	Yes; Portrait mode possible
maximum permitted forward tilt angle from vertical	35°; max. 40°C
maximum permitted backward tilt angle from vertical	70°; max. 40°C
<b>Supply voltage</b>	
Type of supply voltage	AC/DC
permissible range, lower limit (DC)	19.2 V
permissible range, upper limit (DC)	28.8 V
permissible range, lower limit (AC)	90 V
permissible range, upper limit (AC)	264 V
<b>Interfaces</b>	
<b>Video interfaces</b>	
• analog video signal (VGA)	Yes
<b>Degree and class of protection</b>	
IP (at the front)	IP65
<b>Standards, approvals, certificates</b>	
CE mark	Yes
CSA approval	Yes
UL approval	Yes
EAC (formerly Gost-R)	No
<b>Marine approval</b>	
• Germanischer Lloyd (GL)	Yes; Optional
• American Bureau of Shipping (ABS)	Yes; Optional
• Bureau Veritas (BV)	Yes; Optional
• Det Norske Veritas (DNV)	Yes; Optional
• Lloyds Register of Shipping (LRS)	Yes; Optional
<b>Ambient conditions</b>	
<b>Ambient temperature during operation</b>	
• min.	0 °C
• max.	50 °C

#### Ambient temperature during storage/transportation

- min. -20 °C
- max. 70 °C

#### Mechanics/material

##### Enclosure material (front)

- Aluminum Yes

#### Dimensions

Width of the housing front 483 mm

Height of housing front 310 mm

Mounting cutout, width 450 mm

Mounting cutout, height 290 mm

Overall depth 55 mm

**last modified:** 06/12/2020