

Data interface - SI-SES-R1A - 1404513

Please be informed that the data shown in this PDF Document is generated from our Online Catalog. Please find the complete data in the user's documentation. Our General Terms of Use for Downloads are valid (<http://phoenixcontact.com/download>)

Service socket with RJ45 (socket/socket), 8-pos. metal, CAT5e connection



RoHS

Key Commercial Data

Packing unit	1 STK
GTIN	 4 046356 698535
GTIN	4046356698535
Weight per Piece (excluding packing)	15.850 g
Weight per piece (including packing)	16.000 g
Custom tariff number	85366990
Country of origin	Czech Republic

Technical data

Mechanical characteristics

Number of positions	8
Connection profile	RJ45
Shielded	Yes
Insertion/withdrawal cycles	> 100
Insulation resistance	> 500 MΩ

Ambient conditions

Ambient temperature (operation)	-25 °C ... 70 °C
Ambient temperature (storage/transport)	-25 °C ... 85 °C
Degree of protection	IP65 (with closed protective cover)
	IP20 (when plugged in)

Material data

Flammability rating according to UL 94	V0
Housing material	PA

Data interface - SI-SES-R1A - 1404513

Technical data

Material data

Contact material	CuSn
------------------	------

Electrical characteristics

Number of positions	8
Nominal current I_N	1.5 A
GRP transmission properties	CAT5
Degree of pollution	3

Standards and Regulations

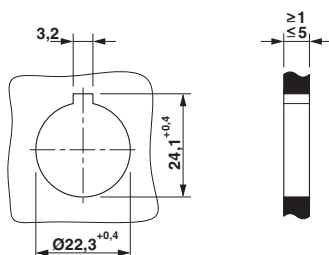
Flammability rating according to UL 94	V0
--	----

Environmental Product Compliance

China RoHS	Environmentally friendly use period: unlimited = EFUP-e
	No hazardous substances above threshold values

Drawings

Dimensional drawing



Classifications

eCl@ss

eCl@ss 4.0	27140816
eCl@ss 4.1	27140816
eCl@ss 5.0	27189239
eCl@ss 5.1	27144001
eCl@ss 6.0	27144001
eCl@ss 7.0	27144001
eCl@ss 8.0	27189217
eCl@ss 9.0	27189217

ETIM

ETIM 3.0	EC000007
ETIM 4.0	EC001855
ETIM 5.0	EC000456
ETIM 6.0	EC000456

Data interface - SI-SES-R1A - 1404513

Classifications

UNSPSC

UNSPSC 6.01	31261501
UNSPSC 7.0901	31261501
UNSPSC 11	31261501
UNSPSC 12.01	31261501
UNSPSC 13.2	39121302

Approvals


Approvals


Approvals

EAC / EAC

Ex Approvals

Approval details

EAC		EAC-Zulassung
-----	---	---------------

EAC		RU C- DE.A*30.B.01102
-----	---	--------------------------